

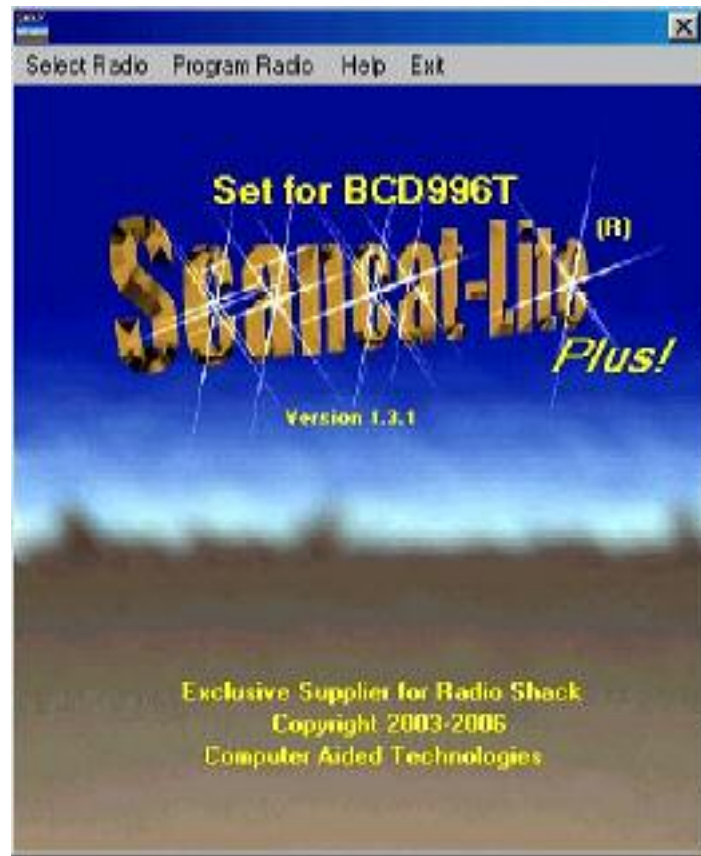
# Scancat-Lite Plus

Scancat-Lite Plus has been designed to make it as easy as possible to program your Scanner from the computer. Working in conjunction with National Communication's Frequency Products and website, we have enabled you to seamlessly acquire - pick and choose frequencies from a master frequency list - and then program them into your radio. All without having to type the first thing. Individual settings for almost every function of your radio, including Trunking parameters, can be programmed on a "by frequency" basis. All with a few simple clicks of the mouse.

**\*\*\* Please Visit our website for Video Tutorials - located at  
www.scancat.com/youtube \*\*\***

**Scancat-Lite Plus is divided into distinct modules:**

These Modules are: 1 - Setups (Select Radio)  
2 - Database (Program Radio)



All of functions of Scancat-Lite Plus are inter-connected by a common interface screen we call the Splash Screen - which is the only place you can exit or terminate the program.

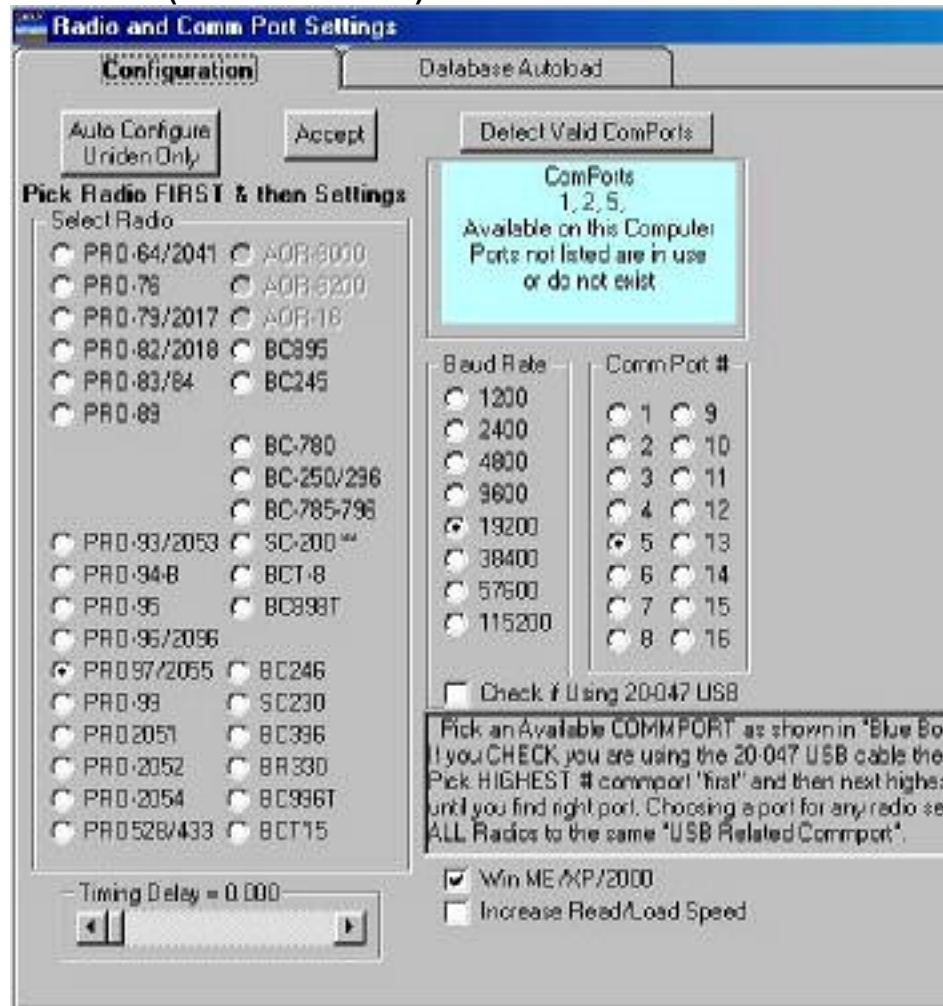
#### **Brief Description of Modules:**

1. Setups – Individual settings for:
  - A. Choosing your Radio. Includes an auto-detect for most common settings (Uniden Radios only)
  - B. Serial Port Connections. Includes a detect function for finding the commports on your computer and if they are associated with any USB Programming cables you may be using (Uniden Radios and Radio Shack scanners)
  - C. Data-file default choices Loads the data-files for you upon boot up of Scancat-Lite Plus
  
2. Database - The database consists of two "grids"upper and lower.

- A. The upper Database Grid contains the Source files for frequencies from our area. **Normally the TOP database grid is not visible** unless a source file has been picked. It is White in background color to set it apart from the Main Database.
- B. Lower Database which is divided into the number of banks of your radio. It has an AQUA colored background. Each Bank is displayed in a tabbed styled interface, each tab representing one of the 10 or more banks in your radio. If the radio has 20 banks or more, then there will be that number of tabbed banks. Along the top menu bar will be a "Bank 1-10 (or) Bank 11-20 etc to permit navigation to the higher bank numbers.
- C. The Lower Database serves to load and read the radio's memories. Frequencies and Group ID's are loaded to the radio from the database. The TDID's and the trunking settings for the bank are Colored GREEN. You can also read the memories programmed into the radio and they are placed into the database. Some radios do not support "Reading", and can only be programmed from the PC. (Mostly Radio Shack units such as the PRO-83/84 and older units that use the Headphone jack as the programming cable connection).

## Detailed Description of Modules:

### - SETUPS (SELECT RADIO) -



- A. **Radio Selection.** Listed are the radios that are supported by Scancat-Lite-Plus. Simply click on a Radio to assign that as the working radio. Always pick your radio FIRST before assigning other settings, as each radio can have a unique setup.
- B. **Database Autoload** - On a separate TAB are two white "Input Boxes". One each for the Source and Personal databases. Double Click on either to change the default databases.

**SOURCE DATABASE (SOURCE)** - You can double click on the white input box and select the Personal and source databases of your choice. These files will be loaded automatically if you select the "Autoload Option". If this is checked, then the source file will be loaded in the TOP Database, when you enter the database screen. (when you select Program Radio from the Splash Screen)

D. **Comport detection.** On the top right of the window is a light blue panel. And, on the bottom right 1/4 of this window is scrolling set of instructions on how to find out what port is assigned to the USB type cables. Normally when you first bring up this window the software will first try to detect the valid comports on your computer. The Serial/Comports can be either "real" ports installed on the computer (usually a DB-9 Pin connector), or can be a USB device that is designed to emulate a comport. The Radio Shack 20-047 USB cable is an "all in one" USB to serial cable that is designed to connect to all existing Radio Shack units. When it is properly installed, a NEW COMM PORT will appear in this menu.

To test if the USB is installed properly and is working, Read the scrolling instructions. They explain to simply unplug the 20-047 USB device from the computer. Wait 10 seconds, press the "Detect Valid Comports" button and one of the comm. Ports listed in the light blue window will disappear. If you plug it into the USB on the computer, press the button and the "new port" will now be listed. The "new" port will be the one to assign to any radios using that cable.

### **C. Timing Adjustments – Timing Slider**

The timing slider is located at the far left at bottom of the Settings Screen. It is not possible to know what the computer environment is for our software, or what radio, or what connections are used. So in order to give the customer the ability to adjust for maximum performance, we use this adjustment slider. We set it for what is "average", but if you have problems, you can make adjustments by sliding the middle bar left or right and then

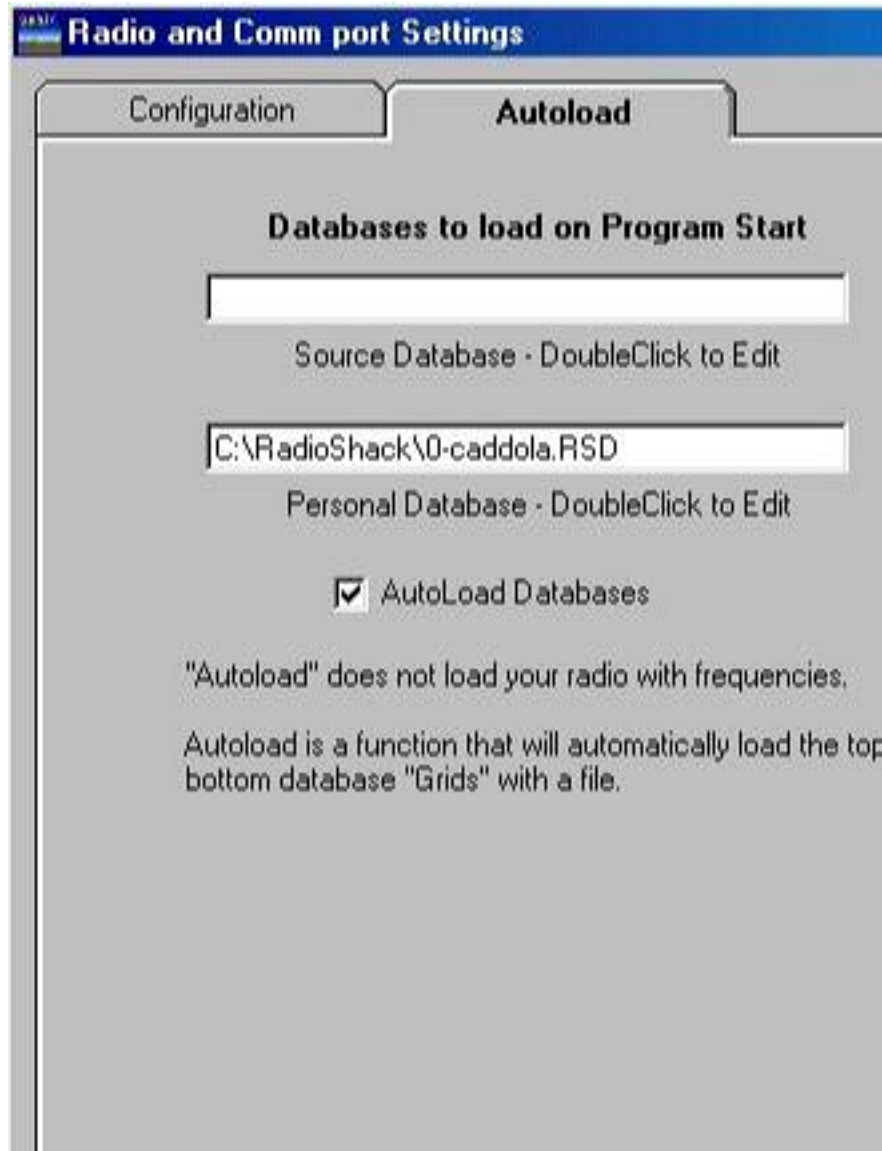
see if that makes an improvement.

Moving to **Left** increases the data transfer speed

Moving to **Right** decreases the data transfer speed

Then if that is not enough “speed increase”, there is also a Checkbox located just to the right of the slider called “Increase Read/Load Speed”. This will speed up the data transfer also.

**PERSONAL DATABASE (TARGET)** – You can double click on the white input box and select the database of your choice. This file will be loaded automatically. If you select the Autoload Option it will be loaded in the BOTTOM (Aqua colored) Database when you select Program Radio from the Splash Screen



- C. **Autoload Database** - Directly below the two database filename input boxes is a Check Box titled "Autoload Database". If you choose filenames as in "B" - these files can be automatically loaded at the start of your program. If you want this option click to CHECK, then "Scancat-Lite Plus" will automatically load these files on startup - when you select Program Radio from the Splash Screen.
- D. **COMM PORT** - Pick the serial/comport you are connecting

the radio to on your computer. If you do not know the correct settings, you can choose the "Auto Detect" function and let this find the existing serial/comports for you. But unless you have a UNIDEN radio, you will still have to go through each of the listed ports to find the one that is connected to the radio.

- E. **BAUD RATE** - Pick the baud rate the radio is set for. If you do not know the correct settings, you can choose the "Auto Detect" function and let this find the correct baud rate for you. (Autodetect only supported for Uniden Radios). Otherwise consult the owners manual for default settings.

\*\*\* Hint \*\*\* (Most Radio Shack units that use "Cloning", only support one baud rate. We will automatically set the baud rate to the correct setting each time the comport is opened to program these type of radios.

- F. **AUTO DETECT - UNIDEN ONLY** - If you do not know settings for COMM and BAUD, you can also use the "Auto Configure" Button, and the Software will poll all possible combinations and if the radio is detected, will set them for you.  
\*\*\* Please Note \*\*\*

Do NOT place a Uniden Radio in MANU mode, or the scanner cannot be detected through software.

The BC-895 and non-Uniden radios do not support Auto Detect. Check your radio owner's manual for correct default settings.

- G. **TIMING ADJUSTMENTS** – this control is useful to set Timing, or what is called "Pacing" of the data being sent and received through the serial Port. Scancat can operate on a wide variety of computer speeds, Windows Versions and serial baud rates. No matter how fast your next computer may be, Scancat-Lite Plus can be adjusted to compensate for these new operating speeds.

**(Default .0001)**

The timing settings for the database and load/read functions of the radio's memories are independent of the timing settings in the scanning module. Simply put, if the data is sent to the radio too quickly, it does not have time to interpret the individual characters and many times it will end up as



"incomplete" frequencies or alpha tags, (or) the radio will report many errors on it's LCD screen. IF this occurs, then adjust the timing to a slightly higher value. This will slow down the process and enabling sufficient time to elapse between data information transfers to and from the radio to be completed.

- H. Related to "G" is a "CheckBox" titled "Win ME/XP/2000". Because these operating systems use a different environment than Windows 95/98/WIN 7, we have found there are variances in the way our timing is treated when running on the newer Windows XP/2000. If you experience problems with the incomplete data going to or being read from the radio, then check this box to tell Scancat-Lite Plus you are using one of these Windows versions.
- I. Detect Valid CommPorts. – This is especially useful for Radio Shack scanners as they do not support "auto configure". So it is a trial and error process to find the correct comm. Port if you do not know which one it is. With USB to serial devices, most times when they are plugged in, there is a "new" comm. Port showing from when the USB device is not plugged in. This can be used to determine the exact comport being used by the USB to serial device, or Radio Shack's 20-047 cable. If you plug or unplug the USB device and then press this button, you can see it "show up (or) disappear" from the list. That will be the comport number to use.

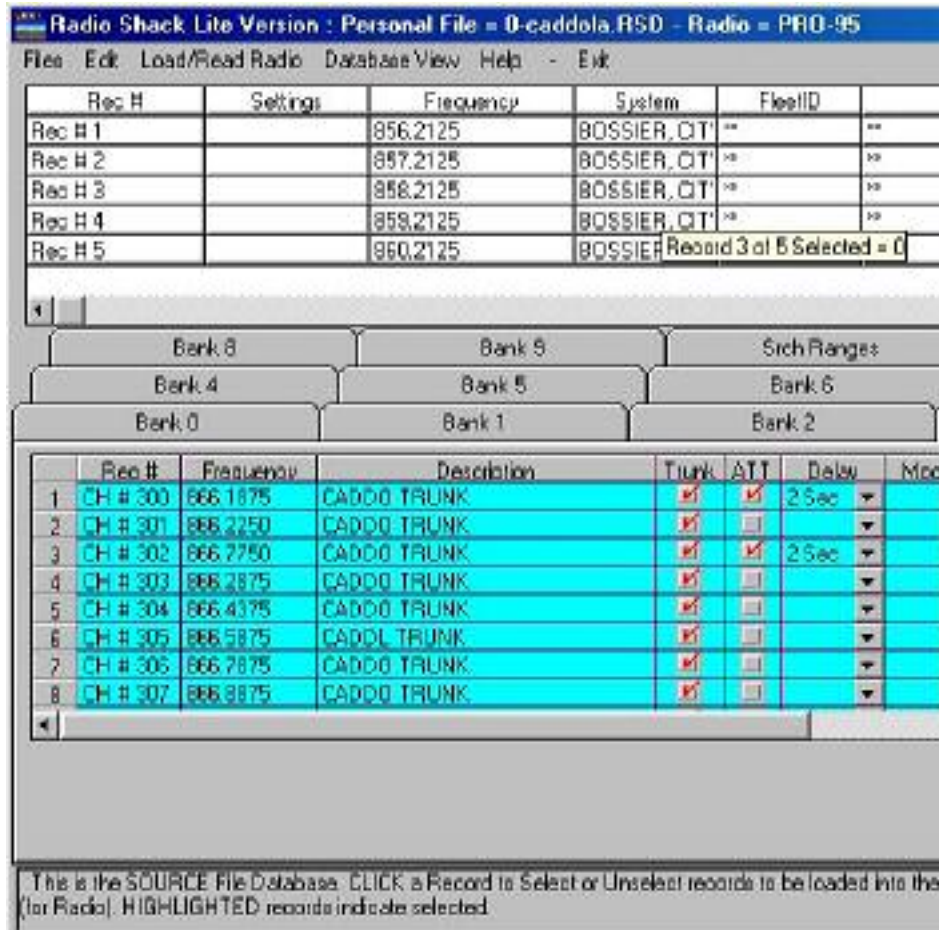
Once all is finished, click "ACCEPT" – You must press accept before you exit or the settings are not saved to the configuration file, The next time you start Scancat-Lite Plus it will use the previous settings.

## DATABASE

### Access the Data base by Choosing "Program Radio" from Main Menu

The database module is divided into two distinct areas or Grids;

1. The upper "Source" database.
  - A. "Normally" the Upper Database is Not present unless you choose to use it. And only the Lower (Aqua) grids are present,
  - B. The Upper Grid is used to load files that are available from National Communication's web site. The files available from this website are all formatted to be compatible with the Scancat-Lite Plus program. Scancat-Lite Plus can also load Dbase III and Dbase IV files. This enables you to load files from other than Nat-Com's website.  
**Source Files have the Extension of ".NFF"**  
**(or older files have extension of ".TXT")**
- B. The Upper Grid is not editable.
- C. Records in this grid can be selectively deleted.



## 2. The lower "Personal Database":

- A. The Lower Grid contains a set of tabs that represent the same numbered bank in your radio. Clicking on a tab will change you to a new Grid with records and settings for your radio.
- B. Within each Tabbed area the database is segmented into colored areas.

**Aqua background** – Frequencies, descriptions and associated settings

- Frequency columns accept only numeric data
- Description columns accept almost all characters.

BUT,

quotes, commas and other delimiters that could cause problems in the saved database will be

removed before it is saved to disk  
- Check Boxes – these show with a red check when  
"on".  
- Drop Down boxes – these contain a number of  
choices and permit  
you to accept any one of them.

**Green Background** – Trunking settings, Fleet ID's and descriptions.

- **Group ID** columns permit only numeric data. HEX, which contains alpha and numeric characters is not supported. "-" such as used in Motorola or Edacs systems may be used and is acceptable.

-**Group description** columns accept almost all characters, but quotes, commas and other delimiters that could cause problems in the saved database will be removed before it is saved to disk.

-"Check Boxes" – these show with a red check when "on".

-"Drop Down" boxes – these contain a number of choices and permit  
you to accept any one of them.

**Trunk SYS Settings** is the farthest to the right column. It contains settings unique to that trunking system. It contains several choices: that pertain to a particular type of Trunking system. The TOP MOST drop down box picks the type of Trunking system. While the rest of the settings are in a single column their position in the column does not relate to a record in the same row. These settings are to be programmed accordingly to the type system in use.

Radio-PRO-9772055 / Scancat-Lite Plus Version : Personal File - montgoh.RSD

File: Select Radio Copy Load/Read Radio Quick Print Database View Help Test - Exit

Bank 6 Bank 7 Bank 8 Bank 9 Search Ranges

Bank 0 Bank 1 Bank 2 Bank 3 Bank 4

	Scan Lists	Group ID#	Group Description	ID Bank Tag	Lockout	Trunk St
1	04-021	04-021	NENIA FD DSP			Trunk Syst
2	04-022	04-022	NENIA FD GND			EDACS WI
3	04-020	04-020	NENIA FD GND			Some Jet
4	04-024	04-024	NENIA FD T4			W/Backup
5	04-041	04-041	CENT ST EMS			
6	04-042	04-042	CENT ST EMS			MOT S
7						OFF
8						
9						Motorola
10						OFF
11						
12	03-090	03-090	SUGARCK PD			Motorola
13	03-092	03-092	SUGARCK PD			OFF
14	03-093	03-093	SUGARCK PD			
15	03-021	03-021	WILBER PD			Motorola
16	03-025	03-025	NENIA PD ALT			OFF
17						
18						MOT R
19						Block 0
20						Block 1
21						Block 2
22	03-041	03-041	NENIA PD T2			Block 3
23	03-081	03-081	NENIA PD T3			Block 4
24	03-090	03-090	SUGARCK PD			Block 5

CTRL+C "Copies" highlighted Cells / CTRL-V "Pastes"

**Yellow Background** – Search Ranges

Radio Shack Lite Version : Personal File = 0-naddola.RSD - Radio = PRO 95

Files Edit Load/Read Radio Database View Help + Exit

Bank 8 Bank 9 Srch Ranges  
Bank 4 Bank 5 Bank 6  
Bank 0 Bank 1 Bank 2

Rec #	Frequency	Description	Trunk	ATT	Delay	Br
1	CH# 0	159.8950	MMIAN POLICE			
2	CH# 1	159.1200	CADD0 FIRE DIST			
3	CH# 2	453.0500	CADD0 SHERIFF			
4	CH# 3	453.1000	CADD0 SHERIFF			
5	CH# 4	453.2500	CADD0 SHERIFF			
6	CH# 5	453.3500	CADD0 SHERIFF			
7	CH# 6	453.6500	SHREVEPORT PD			
8	CH# 7	453.8750	MOORINGSPOET PD			
9	CH# 8	453.9000	SHREVEPORT PD			
10	CH# 9	453.9500	SHREVEPORT PD			
11	CH# 10	460.2000	SHREVEPORT PD			
12	CH# 11	460.2750	LOUISIANA STATE			
13	CH# 12	460.3000	GREENWOOD PD			
14	CH# 13	460.3750	LOUISIANA STATE			
15	CH# 14	460.5000	SHREVEPORT PD			
16	CH# 15	460.5750	CADD0 PARISH FD			
17	CH# 16	460.6250	CADD0 FIRE DIST			
18	CH# 17	462.4500	CADD0 SHERIFF			
19	CH# 18	462.9500	MEDICAL TRANSP			
20	CH# 19	462.9750	LOUISIANA STATE			

The Design of the Personal Database is to permit easy transfer of records into the grid with a minimum of hand typing. This can be accomplished in several ways:

### 1. Pasting FREQUENCIES from the upper source database.

- Highlight records in the source database by clicking on a row. The row will be highlighted in reversed background

Once all chosen records are highlighted

- Click once on the first row in the **lower** database to establish the "insert point".
- Use the Top Menu bar function EDIT / Paste

- highlighted frequencies to lower database
- All highlighted Frequencies and their associated description in the top database will be pasted into the lower grid at the "insert point".

## **2. Pasting FLEET ID'S from the upper source database.**

- If the fifth column is titled Fleet ID's, then this function will automatically "know" the pasting operation is to use these two adjacent columns and will place them into the proper personal database columns.
- Highlight records in the source database by clicking on a row. The row will be highlighted in reversed background

Once all records are highlighted

- Click once on the first row in the lower database to establish the "insert point".
- Use the Top Menu bar function EDIT / Paste highlighted FLEET ID's to lower database
- All highlighted fleet/Group ID's and their associated descriptions in the top database will be pasted into the lower grid at the "insert point".

## **3. Pasting from Excel or similar 3rd party database programs**

- One basic alignment of the Excel spread sheet should be adhered to for best results. Frequency and Fleet ID columns and their descriptions should be next to each other.  
IE: Excel Columns are usually "lettered" A-B-C-D
  - A - Frequencies
  - B - Descriptions for Frequencies
  - C - Talk Group ID's
  - D - Descriptions for TGID's
- ONLY the above columns can be copied to SCL (From Excel). Other columns that contain "settings" will not translate properly when pasted. While they may "look" correct, the underlying "settings" are not correct, and when the file is saved, it will not retain these columns.

- Highlight the cells to be pasted into the Personal database
- Press CTRL + C to copy them to the clipboard
- Go to Scancat-Lite Plus and click on the first cell where you want to start the "Paste" and Press CTRL + V

**4. Copying a cell or group of cells** from one area to another area or bank of the personal database grid.

- Highlight the cells to be copied
- Press CTRL + C to copy them to the clipboard
- Click on the first cell (Top-Left) where you want to start the "Paste"
- Press CTRL + V
- It is possible to copy an entire bank to another bank by highlighting the entire bank to be copied and then pressing CTRL + C to place the bank into the clipboard. This can be done by highlighting all the desired cells and then copying them to the same identical location on a "blank grid". (or) A "short cut" to copy the entire "bank", is to right click on the small blank gray cell at the top left of the "grid". When you do this, the entire "grid" will turn reddish. Press CTRL + C to copy it and then use CTRL + V to paste. Be sure to position mouse on the same cell that you copy *from* or it will not be properly aligned.

**There is no "restore" or "undo"**

**5. Direct entry by hand, a cell at a time.**

- DOUBLE CLICK on a cell
- Notice that the cursor will end up on the first position of an empty cell or at the end position of the data.
- Backspace or place cursor at edit point and start typing. Most type-in cells have a maximum length and will not permit entry once this is reached.
- When finished press ENTER or move the cursor to another cell to make the edit permanent.
- Press the Keyboard ESC key to abort an edit and return cell to it's former contents.

The Scancat-Lite Plus "grid" conforms to most standard Microsoft



conventions of copy and paste operations. However, **Right mouse clicks to invoke copy / paste operations is not supported in the Scancat grid.**

Instead, These are the “**CTRL +**” Keys recognized by SCL, (which do the same thing)

**CTRL + C** - Copys the data contained in the highlighted cells

**CTRL + X** - Cuts the data contained in the highlighted cells (erases)

But the data is still present in the windows clipboard for a “paste”

**CTRL + V** - Pastes the clipboard/copied data

**CTRL+INS** - Inserts a Blank horizontal row and moves all data “down” by one row

**CTRL+DEL**- Deletes a horizontal row and move all data “up” by one row

Basically, using Cut/Copy/Paste you can copy data from almost any source as long as the data is TEXT based (IE: alpha/numeric only) and the data is arranged in the proper columnar format. \*\*\*\* NOTE \*\*\*\* It is not be possible to paste alphabetical characters to a target column that only accepts numeric data. (such as Frequency or TGID numbers).  
\*\*\*Tip\*\*\* If Frequencies do not “paste”, check the formatting, and make sure there are no leading or trailing spaces (spaces are non-numerical).

Brief explanation of Top Menu Bar Selections

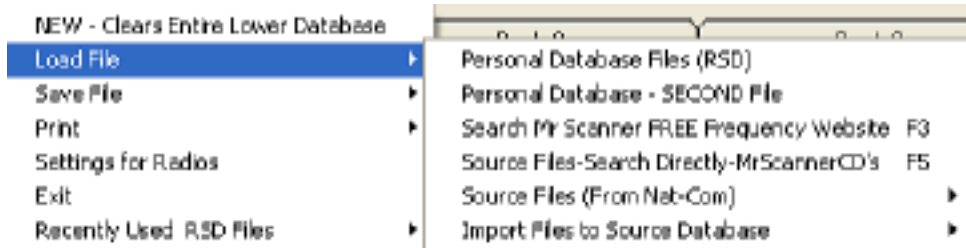
## **Files**

### **\New**

Completely erases all data in all 10 banks. You do get an additional prompt asking you if you are sure. Hitting Cancel (or) ESC will abort. Pressing OK will erase all data. However you would still have to SAVE the file to make all changes permanent.



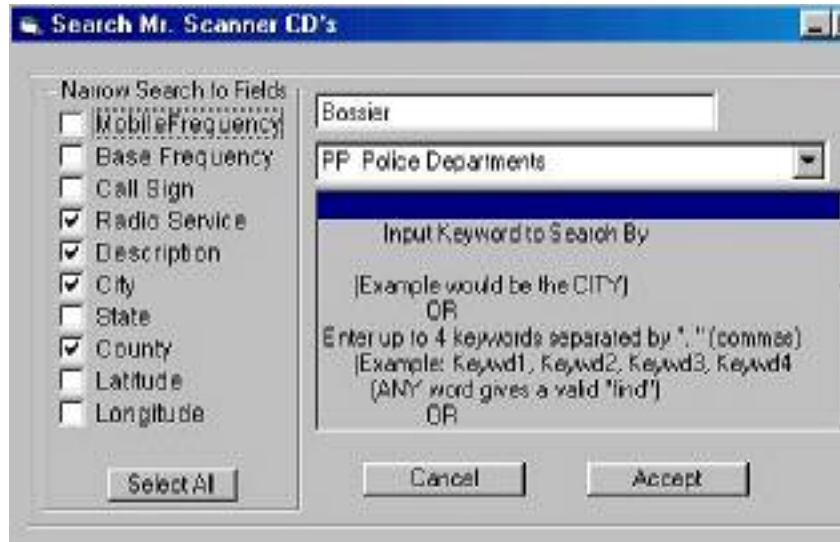
## Load File



## Source

**Nat-Com file** – These are files of conventional frequencies that have been sent to you from National Communications. All Nat-Com files are comma delimited format and have the proper number of fields and location of information within the records. Scancat-Lite Plus has been designed to use these files with no modifications necessary.

**Mr Scanner/Nat-Com.org..DBF file** - These are files of conventional frequencies that have been sent to you from MR Scanner CD or **Nat-Com.org**. All of these files use the standard Dbase IV format and have the proper number of fields and location of information within the records. Scancat-Lite Plus has been designed to use these files with no modifications necessary.



**Read Source Files Directly From Mr.Scanner CD**  
 ( The above screen shot depicts the choices )

Permits reading the Mr. Scanner CD directly, and then places all the “search criteria” into the “upper database” that would normally contain Nat-Com’s source files. You have several ways of searching to improve your ability to filter what you want to find.

**Search by ANY of 4 keywords,**

**finds any occurrence for a hit**

Separate each keyword by a “comma + space”

**“keyword1, keyword2, keyword3, keyword4”**

Example is show on the search prompt screen.

**Search by TWO keywords,**

**finds an occurrence if BOTH words are found.** Separate the two keywords by a “space+Ampersand+space”

**“keyword1 & keyword2”**

Example is shown on the search’s scrolling help screen.

**Narrow Search to Specific Fields**

Sometimes a keyword can occur in several places, such as the description field can contain the same name as a county or city, but would produce a "false hit". By limiting the fields to be actually searched, you can produce more accurate results.

### **Search by Service Code**

Since many of the two letter service codes can also be embedded into the other text, this will enable you to filter by only the service code field. If the keyword combinations you are searching for do not **also** have the correct service code, then this record will be skipped.

**Bearcat Trunk ID.TXT files** - These are files that not only contain conventional frequencies, but have two additional columns that contain the FLEET IDS for that Trunking system. These are files that have been sent to you from Nat-Com.org. All of these Bearcat files are comma delimited format and have the proper number of fields and location of information within the records. Scancat-Lite Plus has been designed to use these files with no modifications necessary.

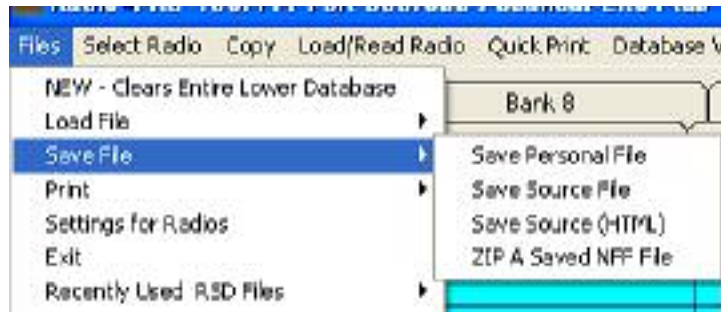
### **\Download from Nat.Comm's Website**

Contains "Hot Links" to the National Communications Frequency download site. There you will find free frequency information as well as how to purchase additional frequency files.

### **\Personal File**

Personal files end with the file extension of "RSD". These files contain all of the information contained in the 10 + banks of the database and in addition contain the information in the search range database.

### **\Save File**



**Save Personal File** - Personal Files always have the "file extension" of ".RSD". This presents the standard "File Dialog". The present filename is in the "Filename" input box. This enables you to save to the same filename or, by typing in a different name, save the same way as using "File Save As".

**Save Source Files** will save the data that is present in the "Upper Database" with the White Background.

**Save Source HTML**, will save as HTML, and permit you to publish that list on a website.

**Save as a ZIP** file permits you to save and automatically have the file zipped for emailing to a friend.

#### **\Print**

**Print Upper Database** – Print the entire upper database. Pages are formatted to print at 60 lines per page and then print subsequent pages with column titles on top of each new page.

#### **\Print All Personal Banks** – Print all 10 banks.

Pages are formatted to print at 60 lines per page and then print subsequent pages with column titles on top of each new page.

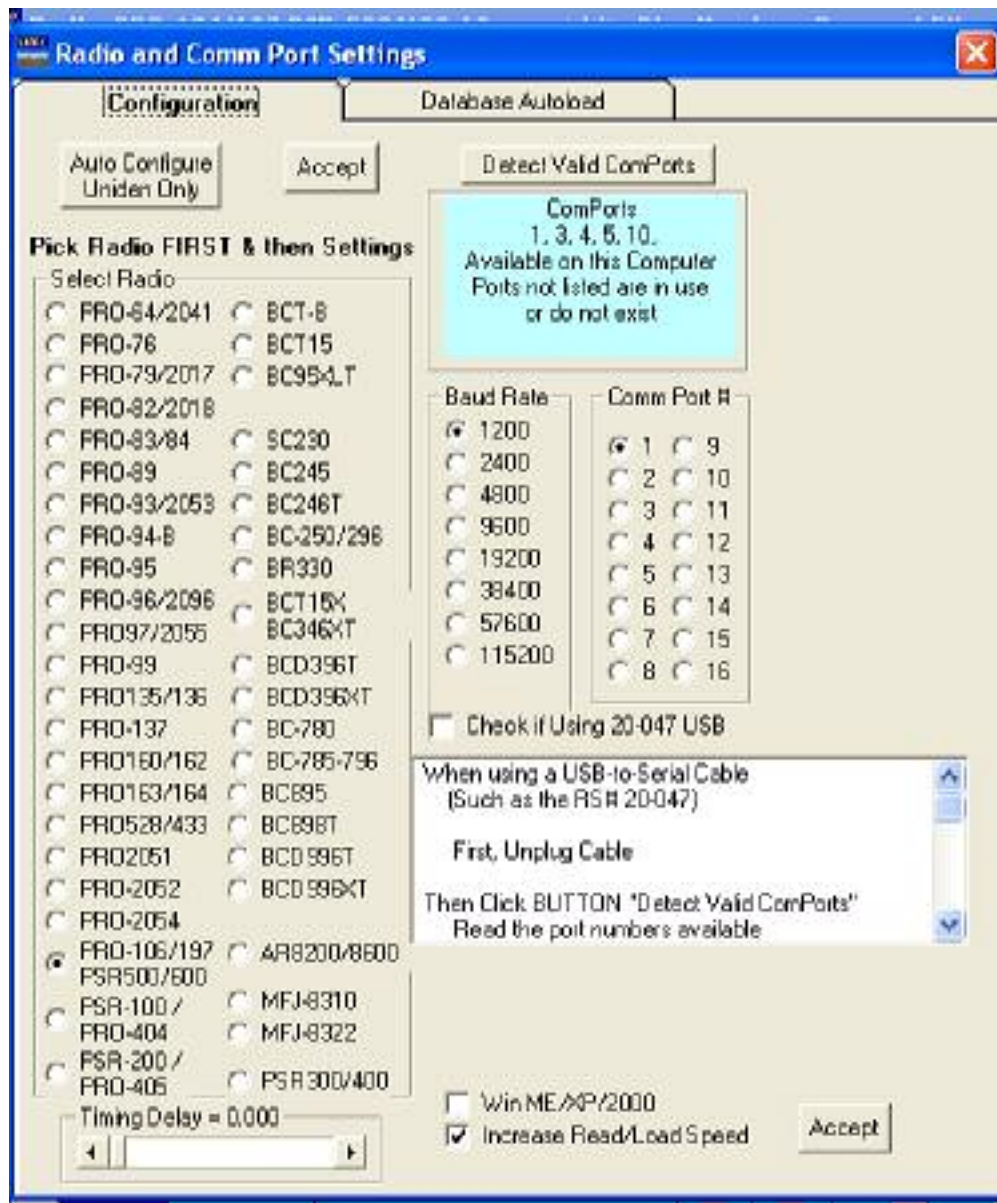
#### **\Print Selected Bank** - Print only the selected Bank.

Pages are formatted to print at 60 lines per page and then print subsequent pages. All pages have column titles on top of each new page.

**\Setting for Radio** – Individual settings for: Choosing your Radio.

This is the same screen as if you choose "Select Radio" from either the Main Splash Screen or on the Program Radio screen

- Includes an auto-detect for most common settings Serial Port Connections.
- Includes an auto-detect for most common settings
- Data-file default choices. Loads the data-files for you upon boot up of Scancat-Lite Plus

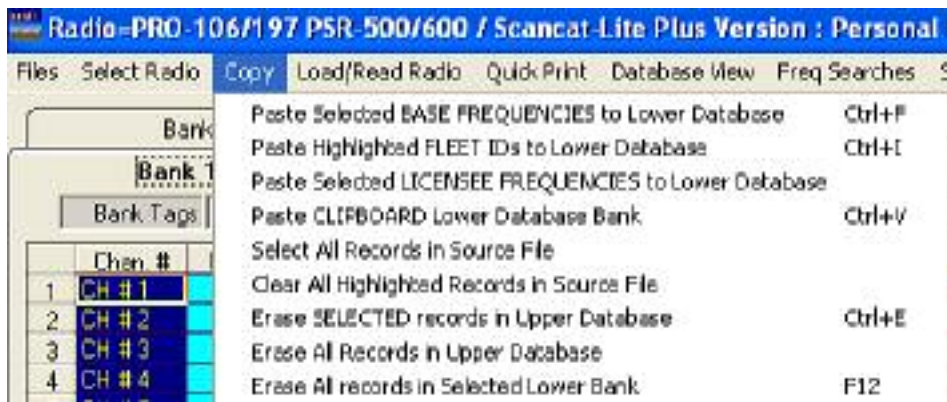


## II. Timing Adjustments – (see explanation above)

III. **Detect Valid CommPorts.** – This is especially useful for Radio Shack scanners as they do not support “auto configure”. So it is a trial and error process to find the correct comport if you do not know which one it is. With USB to serial devices, most times when they are plugged

in, there is a “new” comport showing from when the USB device is not plugged in. This can be used to determine the exact comport being used by the USB to serial device, or Radio Shack’s 20-047 cable. If you plug or unplug the USB device and then press this button, you can see it “show up (or) disappear” from the list. That will be the comport number to use.

## \COPY



### **Paste Highlighted Frequencies to lower database –**

Frequencies can be pasted from the upper to the lower database by highlighting any combination of rows in the upper grid. Once the rows are highlighted, FIRST click the mouse on the row of the lower database row where the paste is to begin and then click this paste option to complete the paste operation.

### **\Paste Highlighted FLEET/Trunk IDS to lower database**

FLEET ID's can be pasted from the upper to the lower database by highlighting any combination of rows in the upper grid. Once the rows are highlighted, FIRST click the mouse on the row of the lower database row where the paste is to begin and then click this paste option to complete the paste operation.

### **\Paste Highlighted Licencee Frequencies to lower database**



Sometimes you may find the frequencies in the "wrong" column. This will enable moving "them" from the upper to the lower database by highlighting any combination of rows in the upper grid. Once the rows are highlighted, FIRST click the mouse on the row of the lower database row where the paste is to begin and then click this paste option to complete the paste operation.

**\Select All Records in Source File** – use this to select all records with a single keystroke

**\De-Select all records in Source File** - use this to clear the highlights of all the records in the source database.

**\Move/Copy a bank to another Bank** – If you want to copy or move all the data including all the settings to a new bank, this will move everything with a single keystroke. A prompt panel pops up and gives you the ability to choose which bank is copied or moved to another bank. Copy will not erase the "From" bank, but Move first copies the bank and then deletes the "From" bank.

**Erase all records in selected lower Bank** – Erase all the data and settings for the selected bank with a single keystroke.

## Load/Read Radio

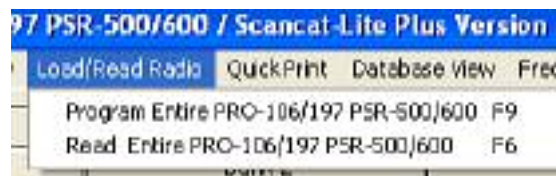
Most Radio Shack units only support a “cloning” function, and the entire radio memory must be loaded/read in one operations.

Other Models, such as from Uniden, will support bank by bank operations.

so

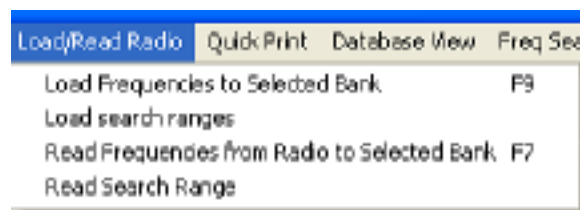
Depending on the radio you have selected, you will see one of these two menus.

### 1 – For Most Radio Shack Radios



or

### 2 - For Most other Supported Radios



**Load Frequencies in selected bank to radio** – First checks to make sure the radio you have picked is the actual radio you have connected to the serial port. This function will load all data in the columns with AQUA colored background including frequencies, descriptions and associated settings to the radio. One exception to the above is, in addition to the frequencies and other data, if any

Trunking buttons are checked to "On", then Trunking system Type and associated settings in that Green column will be programmed to that bank of the radio.

**Load Trunking IDS in selected bank to radio** - First checks to make sure the radio you have picked is the actual radio you have connected to the serial port. This function will load all data in the columns with GREEN colored background including Fleet/Group ID's, descriptions and associated settings to the radio.

**Load Search Ranges to Radio** – The search range database is on the 11th tab. You can program up to ten ranges and in addition there are 10 "Spare" records to enabled quick cut and paste of the ten sent to the radio.

**Read Frequencies From Radio to selected bank** –. This function will read all memory channels for the chosen bank into the database columns with AQUA colored background including descriptions and associated settings of the radio(Radio must support "reading". Some Radio Shack PRO7x and PRO8x radios do not)

**Read Trunking IDS From Radio to selected bank** – This function will read all of the Fleet/Group ID's from the radio and place it into the database columns with GREEN colored background including descriptions and associated settings of the Radio (Radio must support "reading". Some Radio Shack PRO7x and PRO8x radios do not)

**Read Search Ranges from Radio** - The search range database is on the 11th tab. You can read the contents of the radio's search ranges and they will be placed into this tabbed database .(Radio must support "reading". Some Radio Shack PRO7x and PRO8x radios do not)

### **Database View**

**View All** - resets the view so that all of the database columns are displayed.

**Frequency View** – This view only displays the AQUA colored columns associated with frequencies and "hides" all of the Green colored background columns (Trunking)

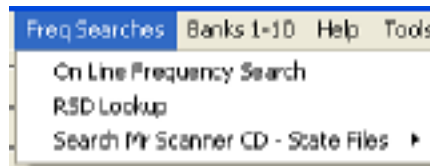
**Trunking View** - This view only displays the GREEN colored

columns associated with TRUNKING and "hides" all of the Aqua colored background columns (Frequency).

**Show/Open Top Database** - This will Force the top (Source) database view even if nothing is contained in it's grids

**Close Top Database** - This will close the top (Source) database view, and show only the bottom database as full screen.

## Freq Searches



## On Line Frequency Search



Mr. Free Frequency Website

[ STOP ] [ PRINT ] ScanCat Info Freq Search Options Extended Help Exit

# Trunktra

Pick a state, province, or other location from below.

Please Choose One

Copy Frequencies/TGIDs to Upper Database  
Mr Scanner "Free" Frequency Website  
MrScanner All FCC "Subscription" Frequency Website  
MrScanner PUBSFTY "Subscription" Frequency Website  
Radio Reference  
NASCAR [www.RaceScanners.com](http://www.RaceScanners.com)  
Show Text Parser Utility  
View Last HTML Created File

Check out National Communications Magazine (Includes FREE on-line database search)

More Scanner Frequencies

More Scanner Frequencies

NATIONAL COMMUNICATIONS MAGAZINE  
Issue Price \$3.95 U.S.  
May/June 2010 Vol. 21, No. 3

This screen by default loads the **"Bearcat1.com Free Site"**. You can pick a state and then locate your city or county to import directly into the "Upper Database" of the main frequency programming area.

The Options are:

### **Copy Frequencies / TGIDs to Upper Database**

#### **Mr Scanner Free Frequency Website (the default)**

**First** use the " Browser" to Choose a State

**Then** Pick one of the "Links" for a city or county.

Once the frequencies are displayed in columns and rows

Choose **Freq Search Options**

Choose **"Copy Frequencies / TGIDs to Upper Database"**

The software will place all the information into the upper Database and then

you can select which frequencies to copy to the lower database for programming to the scanner.

#### **Mr Scanner FCC Subscription Website**

Operates identical to above "Free Site" except you must be a "Paid Member" to access this site

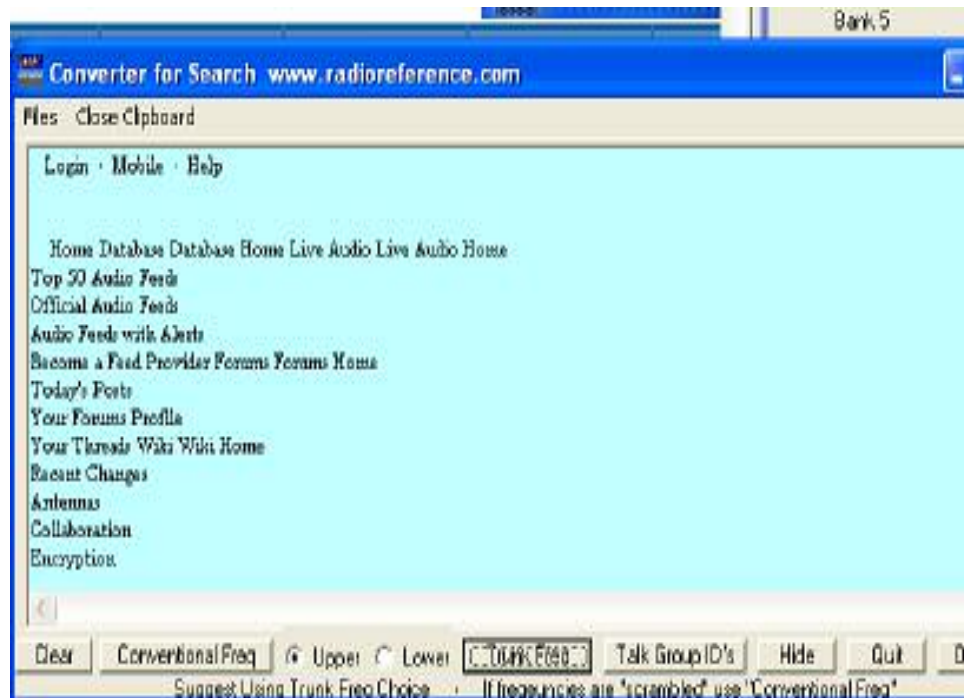
#### **Mr Scanner Pub Safety Subscription Website**

Operates identical to above "Free Site" except you must be a "Paid Member" to access this site

#### **Radio Reference Frequency Website**

The browser takes you to Radio References Website to let you browse

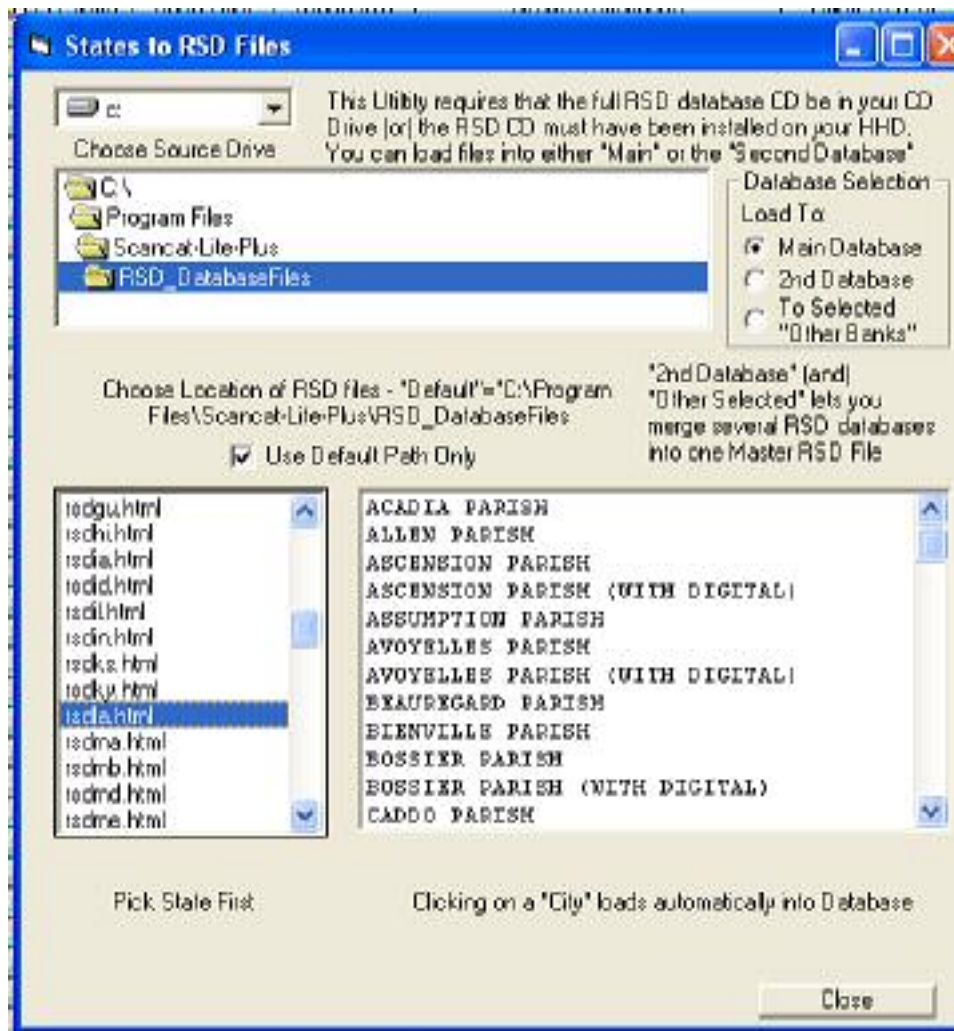
and Isearch for frequencies for your local area. The Screen capture function works a little differencyly in that iwhen you choose to capture the screen it takes you to a seconary "parser screen" and lets you use a number of other options to get he frequencies and talk groups into the Upper Database.



### **NASCAR [www.racescanners.com](http://www.racescanners.com) Subscription Site**

The Race Scanner website is a paid subscription service. It is only accessible if you have paid for a subscription to thier frequency database information.

### **RSD Lookup**



### Search Mr Scanner CD

Refer to **Read Source Files Directly From Mr.Scanner CD**

(This is above under - Source Files )

### Help

**View Help** – displays a text based version of manual inside a scrollable view port.

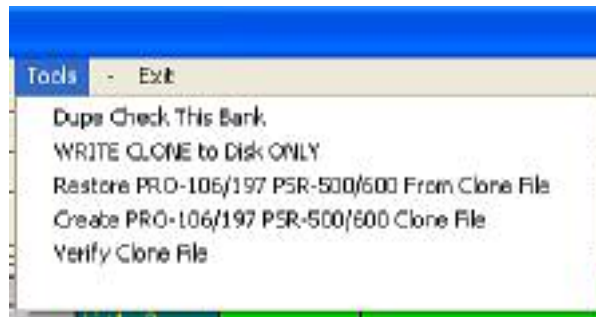
ALSO has a large number of tutorials and “more help” files. We recommend you use this first before contacting us. Most questions are answered here.

**About** – Displays version number and copyright notices.

Also shows the Compile date useful for technical support.

**Abort** - Aborts any "data flow operation" such as loading to or reading from Radio.

**"Tools"** - Depending on the radio selected you have a choice of extra tools such as cloning etc.



**Exit** – Exits to "Splash Screen"

**FAQ** – [www.scancat.com/faq](http://www.scancat.com/faq)

This is not a menu item in Scancat, but we have a continuously updated help site for our most Frequently Asked Questions (an extensive on line FAQ for almost every common issue you may have).





If you don't have the Mr. Scanner FCC CD ROM,

call toll free 1-888-722-6228

Or order on line at:

[www.scancat.com/buynow](http://www.scancat.com/buynow)

If you need more help, also refer to some other FAQ's on copying/cut/paste frequencies - these are available at [www.scancat.com/faq](http://www.scancat.com/faq)

## COPYRIGHT NOTICES

Scancat-Lite Copyright (c) 2003-2011  
Computer Aided Technologies  
Frequency files and data files with the Extension ".RSD"  
are automatically Copyrighted because they are created by our software,  
and remain the Intellectual property of:

Copyright (c) 2003-2011  
Computer Aided Technologies  
P.O. Box 18285  
Shreveport, LA 71118

Copyright (c) 2003-2011  
Norm Schrein Inc  
P.O. Box 291918  
Kettering, OH 45429

You are granted a personal license to use Scancat's RSD Database Files.  
When you installed this product, clicking on the "I Agree", signifies your  
acceptance of this "License"

**Any Commercial Distribution of these databases (or resale) is  
expressly prohibited.**

Removal of this disclaimer is in direct violation of the above Copyrights.

### - Disclaimer -

We do our best to give you adequate documentation. This Manual is composed by our programmer, as he is the only one that really knows the functions of the software. Our programmer is not an "English major", and we are sure you will see grammatical or spelling errors that we have missed. Please don't be too critical of our manuals. We do our best. The manual is always a work in progress. Small changes in the program are not always updated in the manual immediately. Please go to our FAQ site for the latest manuals and also the addendums that apply to some of the newer Uniden Radios.

The Direct link to our FAQ (Frequency Asked Questions WebSite is:

<http://www.scancat.com/faq>

If your Adobe PDF reader supports "hyper links",  
these should take right to the URL on our website:

[www.scancat.com/onlinehelp](http://www.scancat.com/onlinehelp) (main entry point for all our help locations)

<http://scancat.com/OnLineHelp/FAQ-AssortedSubjects/> (FAQ (Frequently Asked Questions))

<http://scancat.com/OnLineHelp/ManualsAndHelpFiles/> (Scancat PDF manuals / Addendum / Doc)

Thanks for your support!

Jim Springer  
President.