

## ADDENDUM FOR UNIDEN HOME PATROL

The Home Patrol is a radical departure from the conventional "USB/Serial Port" style of programming.

Home Patrol uses an Internal Mini SD Card (Memory card). The SD card contains a database of all frequencies and talk groups etc for the entire 50 states. Then by selecting a scanning systems available for a given geographical area the radio is "programmed" to receive the selected area. Using the Radio's touch screen menu system the user can configure the scanner to receive systems based on a given area/zipcode/ or create custom "Favorites Lists" from the supplied USA 50 State Data base that is contained on the SD Card.

The favorites lists are stored in a special folder/directory, and can be used to set up a more selectable scanning of your favorite systems. However if the frequencies you want to hear are not contained in the "Provided" database, or are not contained on the Radio Reference Site, then there is no practical way to add these frequencies. Examples of these frequencies would be "cordless phones", Ham Radio Repeaters not associated with "Sky Warn", CB radio, and etc.

If you have another scanner and would like to program your Home Patrol to scan the same setups, then there is no practical way, even using Uniden's software to transfer or "import" these frequencies From your "other scanner" or from it's software data files, and quickly setup the HP. (Unless you have Scancat-Lite-Plus)

All Programming we do to the Home Patrol is accomplished using the "Favorites Lists", but you can program ANY frequency within reception ranges of the HP Scanner even if the HP DataBase does not contain them.

The following is a simple guide to get you started.  
and....

We are also producing a New Video Tutorial that will detail how to program the scanner and how to manipulate the built in database to create favorites lists which are then stored in our regular RSD File Structure.

When you first Start up Scancat, at the "splash screen", first Choose "Select Radio".

On the second column pick the HOME PATROL as the radio.

When you do this you may notice the comm port frames disappear. That is because the only communications with the radio will be through the USB port to the HP Scanner's SD Card/Memory.

Then Choose "Accept" and you are returned to the Main Menu/Splash Screen

Choose "Program Radio".

Then click on the Menu "Load/Read Radio"



There are 3 options:

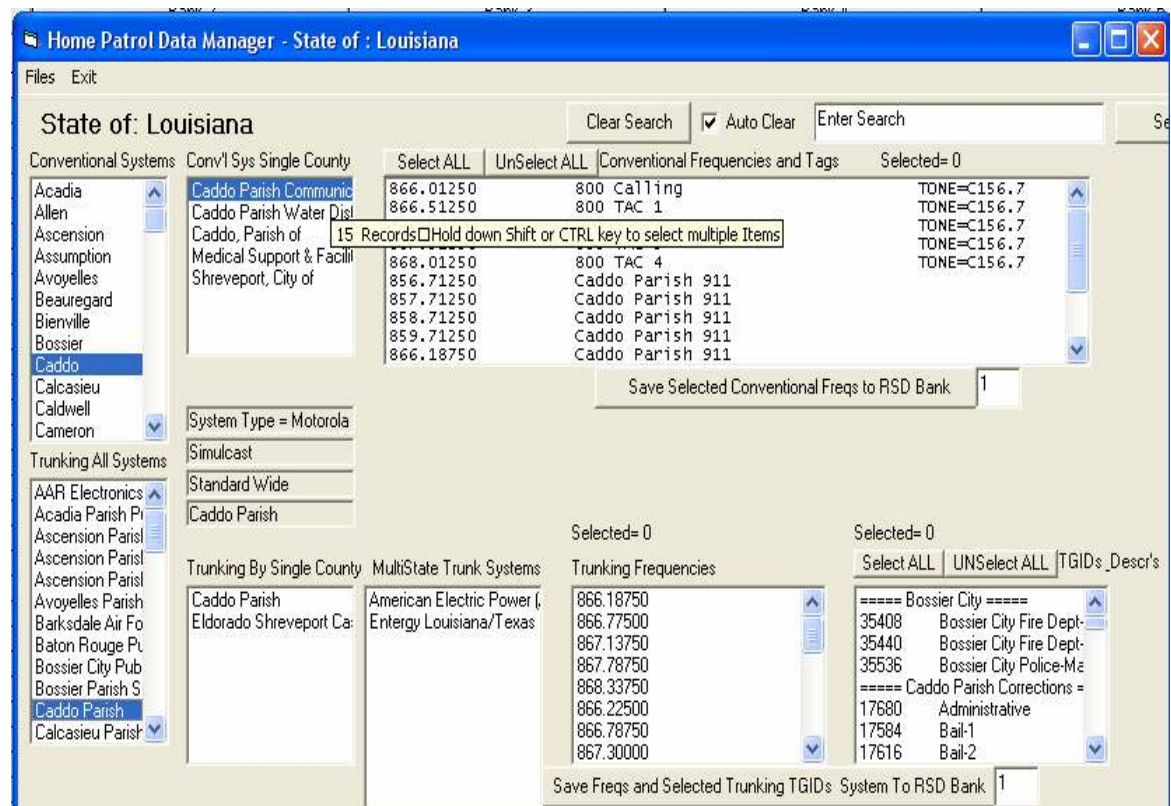
1 - Load Uniden Home Patrol Data Files

- 2 - Convert RSD to HomePatrol
- 3 - Move Scanner's database to Hard Drive

## Option 1: Load Uniden Home Patrol Data Files

This accesses the Built In SD Card's database. There are a number of "frames" that you can click on to locate conventional or trunking systems programmed into the database for a given State. This works much like a "tree view" but each branch is contained in a frame instead of displaying a "tree view".

Each of the results of the "system frames" can be then "exported" or Converted into an RSD file, So looking at the "Summary" below you can accomplish this in just 3-4 keystrokes for Conventional or Trunking Systems.



## Summary of Features and Display "boxes"

The screen is divided into two halves, which contain the Counties within a State

- 1- Conventional Systems (Top half of screen)
- 2- Trunking Systems (Lower half of screen)

Then, Each of the top/lower sections are further subdivided into systems within a "County" (and) the "Multi-State Database" is also loaded for the surrounding States/area

These appear directly to the right of the "County" list boxes Showing:

1. All Conventional Systems within a single county
  - > Frequencies / Description / Tones (if applies)
2. All Trunking Systems withing a single county
  - > Frequencies / TGIDs with Descriptions

Once you have the desired system and it's contents displayed in the far right most listing box, it is a

simple matter to transfer it to the RSD file. Depending on if you want to transfer a conventional or trunking system, just select the frequencies and TGIDs (if trunking) to the Grid in View. You can pick the receiving grid by just typing in the Number in the small input and pressing <Enter> in the box to the right of the "Save..." button (or) change the grid by clicking on the tabs. There are a total of 20 Banks/Systems you can transfer "per RSD file".

This process only transfers "One Grid" at a time, so you can then change the data, pick a different numbered grid, and quickly populate that system.

1 - Select the frequencies etc. by clicking on them. Holding down the SHIFT or CTRL keys while selecting will enable Multiple selections. Or you can use the buttons to simply "Select all".

2 - Once selected, just press "save" on either the Conventional or Trunking Halves, and they are transferred to the RSD Database "Grid in View". Normally the Trunk Sys Settings will be set up with the appropriate trunking type, but it is always a good idea to check for accuracy before saving the file

**Hint** - The "starting Point" of where the frequencies are transferred will always be below the position of the "selected row/cell", so if your frequencies begin at (example) row 15, just click on the very first row to reset the "starting point".

FYI - The Added "empty row" at the top or between rows is the default and will not make any difference in the final transfer to the Home Patrol's Data Files, But it also prevents overwriting the above data if you are wanting to transfer more than one to the same grid (For Conventional systems only)

**Cautions:** - You cannot transfer more than ONE trunking group per grid,  
- You cannot transfer multiple Trunking systems to the same grid  
- You cannot mix conventional AND trunking in the same system.  
It Simply won't work when the radio tries to use them.

Lastly - Name your "Banks" in the Bank Tag input box on the top of each grid and "save the file" to your Home Patrol's "Favorites List" section (see below for full instructions)

## Option 2: Convert RSD to HomePatrol

Loading a RSD file from either the ones provided with our COMBO CD, or using your personal RSD files that were used to program your other scanners, you can quickly convert these and write to the SD Card and within a couple of minutes, select those favorites and be scanning them on the Home Patrol

The Home Patrol displays a small "icon" on it's screen, that indicates the type of service being heard. There are 20 Icon's in all, and if you place these keywords in the text description of the file then an icon will be automatically picked based on the "hit". So Look up a keyword to place in the description, and it will then show one of the numbered icons on this first/top list.

```
===== KNOWN DISPLAY TAGS/ICONS -- SHOWs AN "ICON" AND AN "ICON TAG" =====
==          WHEN "SELECTED" BY BELOW KEYWORDS          ==
=====

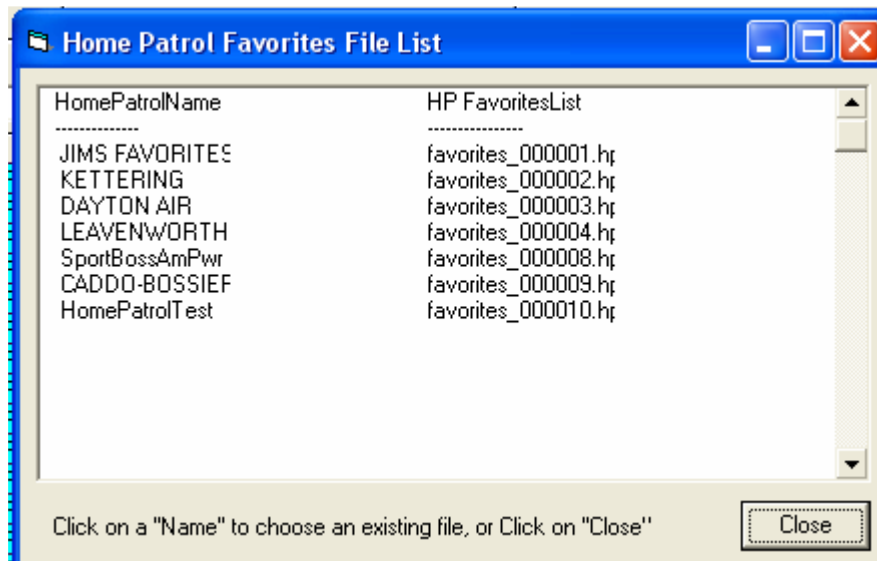
== 1 =MULTI DISPATCH
== 2 =LAW DISPATCH
== 3 =FIRE DISPATCH
== 4 =EMS DISPATCH
== 5 *** NA ***
== 6 =MULTI TAC
== 7 =LAW TAC
== 8 =FIRE TAC
== 9 =EMS TAC
== 10 *** NA ***
== 11=INTEROP
== 12=HOSPITAL
== 13=HAM
== 14=PUBLIC WORKS
```

== 15=AIRCRAFT  
 == 16=FEDERAL  
 == 17=BUSINESS  
 == 18 \*\*\* NA \*\*\*  
 == 19 \*\*\* NA \*\*\*  
 == 20=RAILROAD  
 == 21 \*\*\* NA \*\*\*  
 == 22=MULTI-TALK  
 == 23=LAW-TALK  
 == 24=FIRE-TALK  
 == 25=EMS-TALK  
 == 26=TRANSPORTATION  
 == 27 \*\*\* NA \*\*\*  
 == 28 \*\*\* NA \*\*\*  
 == 29=EMERGENCY OPS  
 == 30=MILITARY  
 == 31=MEDIA  
 == 32=SCHOOLS  
 == 33=SECURITY  
 == 34=UTILITIES  
 == 35 \*\*\* NA \*\*\*  
 == 36 \*\*\* NA \*\*\*  
 == 37=CORRECTIONS

===== ANY "ONE" KEYWORD PRESENT IN FREQ DESCR. OR TGID DESCRIP. WILL "TRIGGER" DISPLAYING AN ICON =====  
 = Keywords only "activated" in Frequency descriptions if programming a conventional system, and ignored when in Trunking Systems =  
 =====  
 =====

1 MULTI  
 2 PD TACTICAL POLICE LAW STATEPATROL PATROL SHERIFF  
 3 FIRE HOSPITAL  
 4 LIFE EMS AMBULANCE RESCUE  
 5  
 6  
 7 ADMIN PRECINCT ADMINISTRATION COMMUNITY  
 8 VOLUNTEER  
 9  
 10  
 11 INTEROP STATE  
 12 HOSPITAL CONSTRUCTION DISASTER  
 13 HAM AMATEUR  
 14 PUBLIC TREE TRASH GARBAGE SANITATION WORKS  
 15 AIRPORT AIRPORT AIRCRAFT APPR APPROACH AERO TOWER  
 16 FOREST FEDERAL  
 17 BODY PAINT TOWING DELIVERY TAXI TALK HAZMAT BUSES SPECIAL SERVICES  
 18  
 19  
 20 RAILROAD RAILROADS  
 21  
 22 TALK  
 23 PARKING  
 24 VOLUNTEER COMMAND 911  
 25 HOSPITAL AMBULANCE  
 26 HOUSING HIGHWAY TAXI BUSES TRANSPORTATION  
 27  
 28  
 29 EMERGENCY FEMA  
 30 MILITARY  
 31 MEDIA  
 32 SCHOOL SCHOOLS  
 33 SECURITY  
 34 WATER GAS LIGHTS POWER PWR CONNECTIONS OUTAGE ELECTRIC UTILITIES ", ff(ii)) Then FUNCTIONTAG = 34  
 35  
 36  
 37 GUARD CORRECTIONS CORRECTIONAL PRISON

## Selecting a file



The convention used by the radio to keep track of the Favorites List was not really designed to be implemented with "software". When using the radio "manually" you are asked to type in a "Name" for the Favorite. That name is displayed on the favorites menu, but the actual filename stored on the "card" is different.

For Instance if there are 11 favorites already stored (then)

"Favorite Name" is "Local Police"

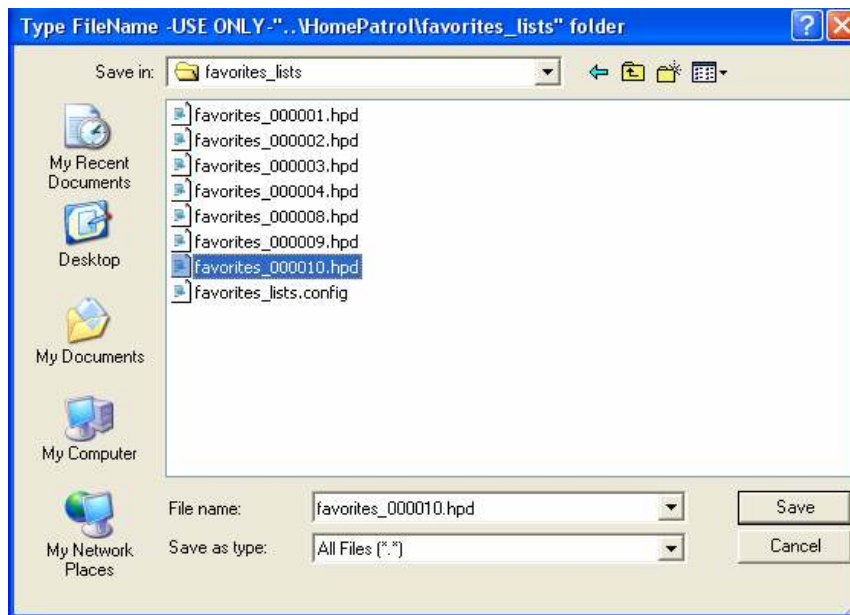
"Favorites FILEname" is "Favorites\_000012"

So if you are editing/updating an existing file, you may want to be sure what filename contains your Favorite Name.

The Above window pops up to give you the "translation"

Click on a filename and it will place the corresponding filename into the "filename" selection (like the below window)

If you click on CLOSE, the "filename" below will be "nulled" and you can pick from one of the displayed names.



**Selecting a file** name to write to the Home Patrol's Favorites Lists requires some "disipline".  
 ALL of the favorites Lists must be named "Favorites\_0000###".hpd  
 IE: Favorites\_000012.hpd  
 This is because the HP Scanner cannot find any file that does not have this filename with numerical convention  
 SO...

**To create a brand new file**, you enter the name of what you want to appear on the  
 Home Patrols Menu under "Favorites\_Lists"

IE: 1 - Enter a name such as "My Local Cops"  
 2 - Press Enter of "save"

We place the name of "My Local Cops" into the config file, and then name the  
 actual file "Favorites\_000012.hpd" OR if there is already a  
 "Favorites\_000012.hpd" it would be named "Favorites\_000013.hpd"  
 or 14 or 15 etc incrementing upward until it is above the last "number"

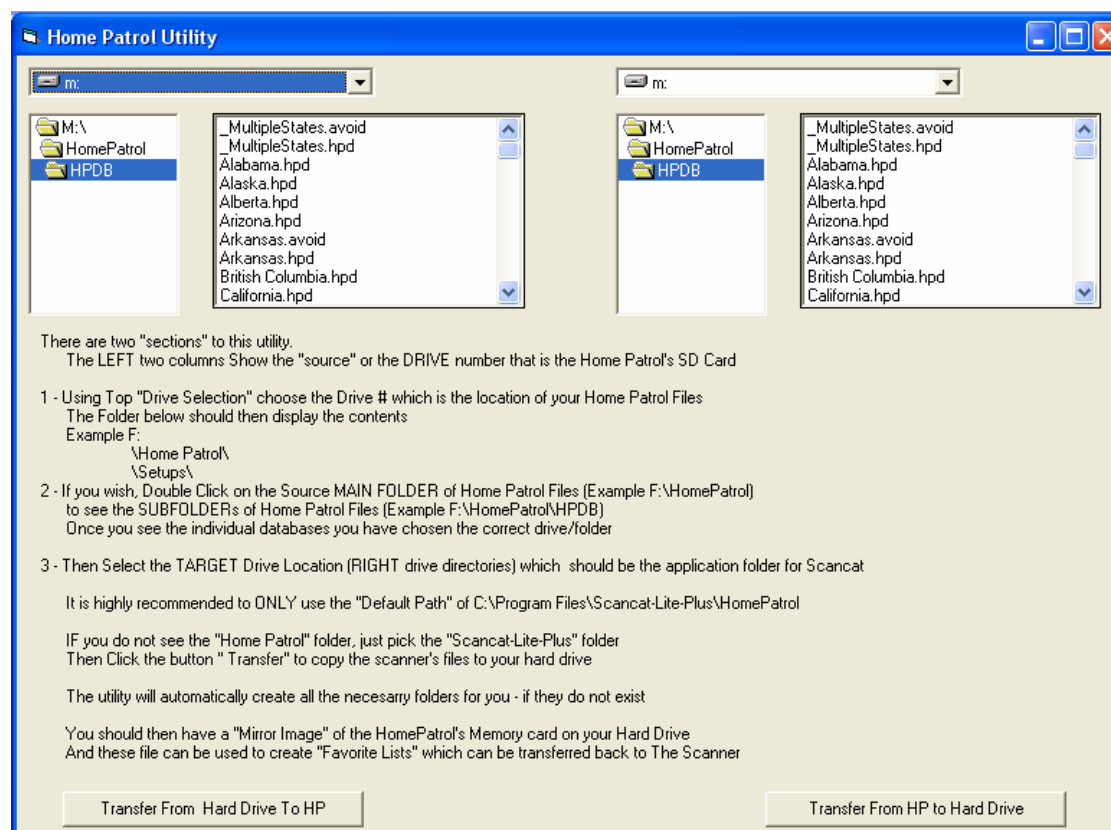
("My Local Cops" will show up on the Home Patol's Favorites Lists, not the Numerical oriented  
 number.)

**To overwrite an existing file**, you simply click on the existing filename and it will be updated or  
 completely overwritten with new or changed data.

Once you become accostomed to this way of saving RSD files it is simple

### Option 3: Move Scanner's database to Hard Drive

If you wish to work on your databases "off line" without connecting the radio, you can move the entire SD card and its contents onto Your Hard Drive. Then you can create favorites and copy "those" back to the HP Scanner the next time you connect it.

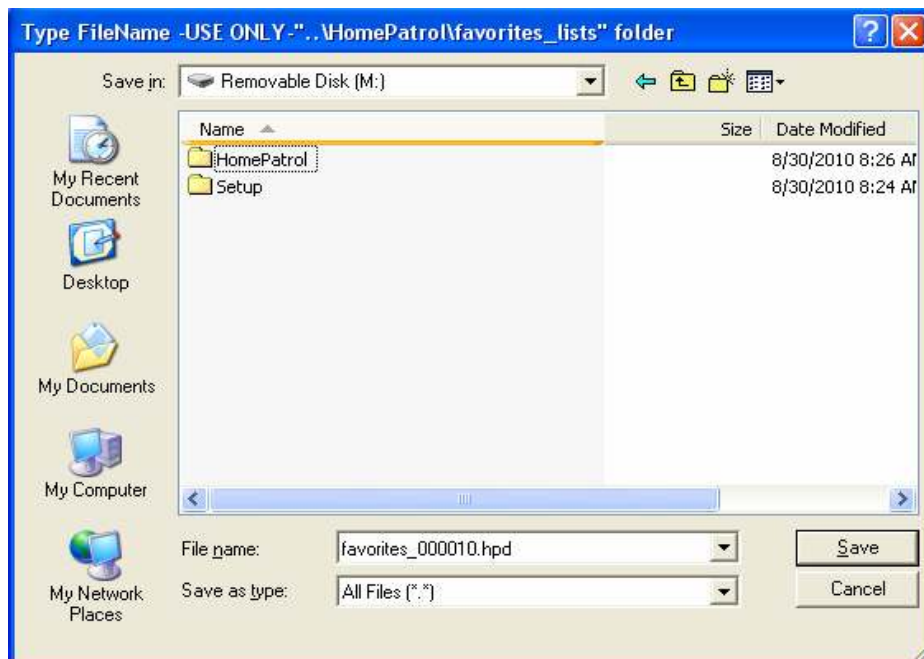


The "move" utility screen looks like the above.

It serves two functions

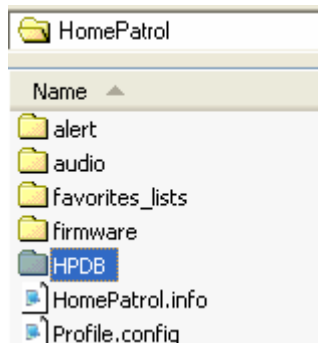
- Moves all Files to the HDD, where you can then use them off line without a radio connected to the USB port, to edit/change/modify the Davorites Lists
- Moves all Files FROM the HDD, back to the Home Patrol once editing is complete

You must FIRST navigate to the correct folder of the Home Patol Scanner in order to tell Scancat the location of the data files. So look below for the steps, And, there are instructions on screen for what to do.



In the above example, the Home Patrol is assigned the "M" drive.  
There are two folders in that drive HOME PATROL and SETUP.

We are interested in the Home Patrol Folder which contains THESE sub folders



Open the HPDB folder to assure it has the database contents, and then if so, Press the appropriate "move" buttons.

For More details "how to" instructions, please visit our website at  
[www.scancat.com/youtube](http://www.scancat.com/youtube)  
 for a set of Video Tutorials - one specifically created for the Home Patrol Scanner



## **Hints and Tips**

We have encountered a few things that you need to check on if the frequencies generated by the RSD conversion do not seem to "work".

- **1** - The convention used by the radio to keep track of the Favorites List was not really designed to be implemented with "software". When using the radio "manually" you are asked to type in a "Name" for the Favorite. That name is displayed on the favorites menu, but the actual filename stored on the "card" is different.

For Instance if there are 11 favorites already stored (then)

"Favorite Name" is "Local Police"

"Favorites FILEname" is "Favorites\_000012"

If you add another one

"Favorite Name" is "Local Sheriff"

"Favorites FILEname" is "Favorites\_000013"

(Incremented upward and so on)

So when Saving to an existing filename in Scancat, we first pop up a small window that shows both the "Favorite Name" and "Favorite FILEname". This way you can know what filename is associated with what Favorite name.

To create a NEW favorite just type in the "Name",,,, such as "Local FireDept", and Scancat will take care of the translation and create the new filename IE: Favorites\_000013 and etc.

- **2** - When Selecting the favorite for the first time in the Home Patrol, Be sure to choose NO to the option "Use Location Control". Otherwise, you may not be able to scan the listing.

- **3**- If you don't hear a lot of transmissions, or you notice when the radio loads your Favorite Lists, there are only a "Few" frequencies selected as the radio first loads your list, go to the MENU > Select Service Types and turn everything you can "on" by pressing the service type. IF that service is part of the RSD/Favorite database, then you can turn it on and the selection will show "orange". Refer to the Lookup table above, as we use these keywords to select a service type. If you there are no keywords (above) that apply, then the DEFAULT service type will be the "Multi-Dispatch"